



Fostering a Faculty Culture of Continuous Learning & Engagement

2-MINUTE MENTORS -- SEMINARS -- EVENTS -- SOTL -- PUBLICATIONS

APPLY TO BECOME A FACULTY FELLOW

The Faculty Fellows Program allows faculty the time and resources to engage in (and experiment with) innovative teaching practices and to contribute to the development of learning across Park University. Five Faculty Fellows will be selected in spring 2019 to serve during the 2019-2020 academic year. All interested faculty (full-time, adjunct, distance, etc.) are invited to apply by APRIL 1st. Learn more and [APPLY TODAY!](#)



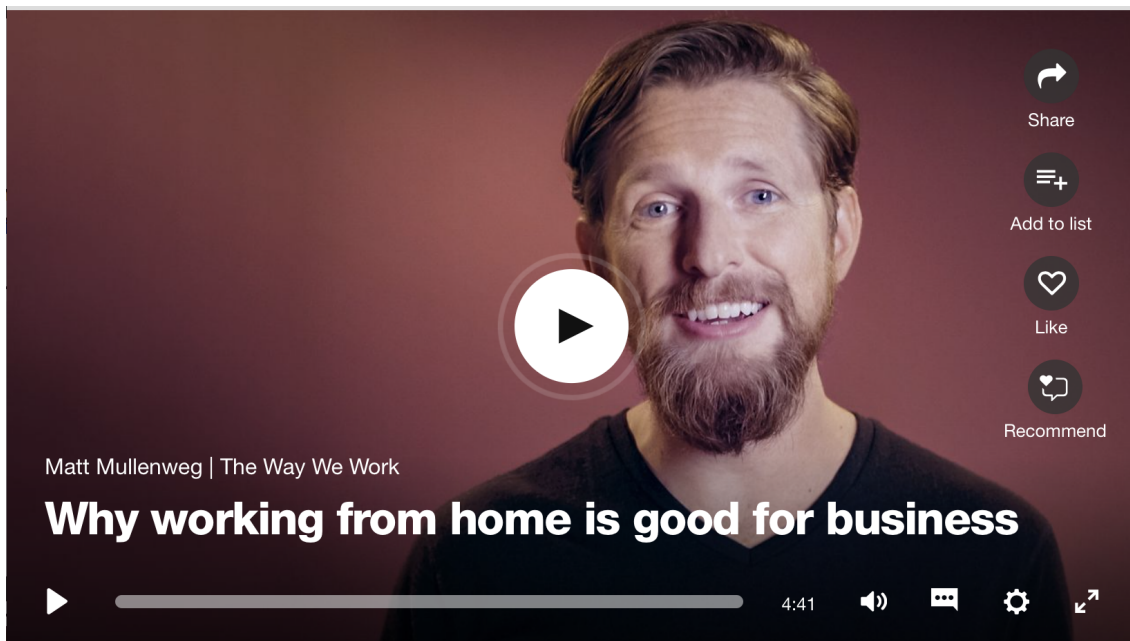
TECHNOLOGY TIPS: POLL EVERYWHERE

Are you interested in live interactive class participation during your classes or audience participation during your presentations? [Poll Everywhere](#) works in PowerPoint, Keynote, and Google Slides. With nothing more than a big presentation screen and a room full of mobile phones, you can spark a lively conversation that includes everyone. Ask them questions, or have them ask you. For more information about teaching strategies utilizing Poll Everywhere contact [Melanie Kinney](#) (Coordinator of Educational Technology Initiatives).



THE WAY WE WORK: DISTRIBUTED WORKFORCE

As the popularity of remote working continues to spread, workers today can collaborate across cities, countries and even multiple time zones. How does this change office dynamics? And how can we make sure that all employees, both at headquarters and at home, feel connected? Matt Mullenweg, cofounder of Wordpress and CEO of Automattic (which has a 100 percent distributed workforce), shares his secrets.



CONNECTING COLLEAGUES: KATHY JACKSON

Alarms begin blaring. Beeping from life-saving machines intensifies. A mother giving birth has just had a seizure during labor. Kathy Jackson, a [Park University Nursing](#) professor, keeps a cool head as her students expertly spring in to action under her watch. After the crisis is averted, she circles up with her team, breaking in to relieved smiles, to talk through the drill. This was the situation when we paid a visit to her Obstetrics Simulation lab, and even though it was just practice with a plastic dummy, it was intense. Kathy will be celebrating thirty-seven years as a Nurse this spring, thirty-two of which have been in Obstetrics and Women's Health. To learn more, read Kathy's story [HERE](#).



©2019 Park University Faculty Center for Innovation. All rights reserved.
8700 NW River Park Drive, Parkville, MO 64152
(816) 584-6770 -- innovatepark.org

You receive this email because you are a Park University instructor or administrator.