



SPECIAL ISSUE: RESPONDING TO COVID19



Park University continues to monitor and respond to the COVID19 virus. Please visit the University's page at www.park.edu/coronavirus for the most up-to-date information about the University's response and the supports in place for students, faculty and staff. Additionally, faculty can visit www.innovatepark.org for teaching resources specifically aimed at supporting academic continuity in times of uncertain access to on-ground facilities.

Keep Teaching @ Park

To support all faculty in maintaining academic continuity in times of uncertainty, FCI has put together specialized resources. These resources will continue to evolve and expand as more information and materials become available. Please click the link below to "Keep Teaching @ Park".

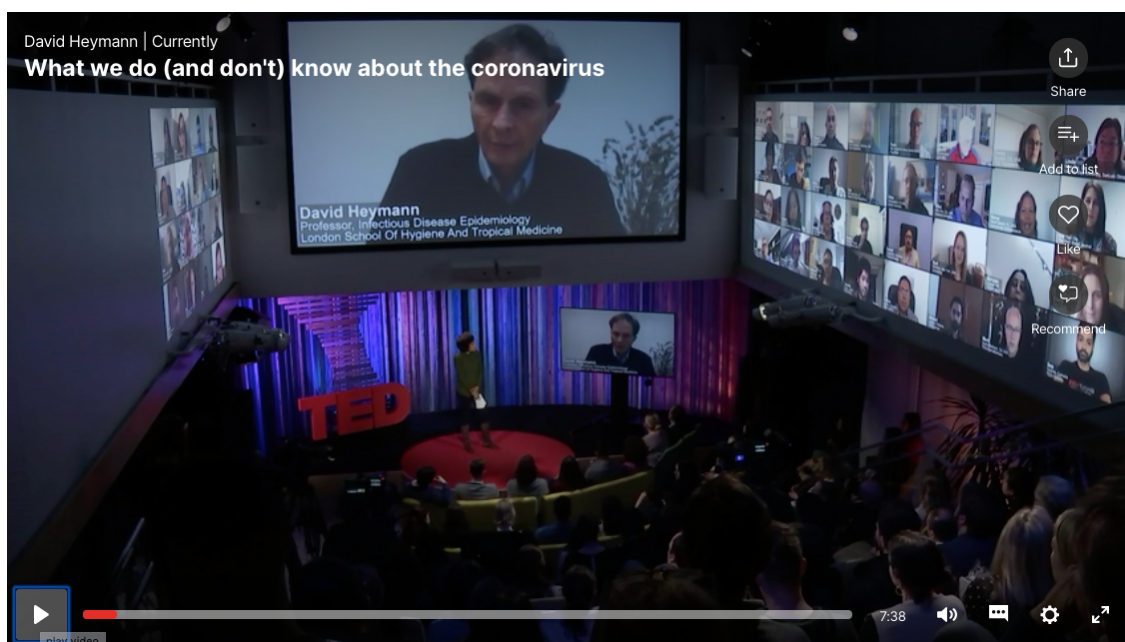
[Keep Teaching @ Park](#)

Canvas Support Technicians are available 24/7/365 (call +1-833-822-0339) or **chat** by clicking on the HELP button in your Canvas course shell. Faculty

can reach out to the [Digital Learning Team](#) (hover over images to view contact information) and the [Faculty Center for Innovation](#) for personalized assistance with the transition of their course activities online. Faculty should send online course design and teaching questions to keepteaching@park.edu. Please make sure to include your course and section information (e.g., EN 105 HO) and a phone number where you can be reached.

What We Do (And Don't) Know About the Coronavirus

Please review the following TedTalk to learn more about the coronavirus. For example, this talk uncovers what pre-existing medical conditions put people at greater risk, where to find up to date information, how to best respond, and what questions are still unanswered.



Please learn more about what we do (and don't) know about the Coronavirus

Completing a Face-to-Face Course Online

by Todd Zakrajsek & Kathryn Smith

As Zakrajsek & Smith share in their article about faculty at institutions around the country who are transitioning courses online, "*Converting a course from face-to-face to an online format is a challenging process in the best of times, and we are certainly not in the best of times at this moment. Due to the COVID-19 pandemic, numerous universities have suspended face-to-face classes, imposed temporary closures of campuses, and asked faculty members to convert face-to-face courses to an online format, all with very little time to prepare. Making this significant switch midsemester is difficult. We offer a few*

considerations that may make the end result smoother for both faculty and students". Learn more practical tips and strategies for transitioning courses online [HERE](#).

Food For Thought

As we work to accommodate our new reality today, we should also understand our ability to impact *how* this experience is framed for our learners. Arthur Ward (philosopher at Lyman-Briggs College at Michigan State) shared with his fellow professor friends:

"Take a moment to freak out about the semester that just got smashed to bits. But then consider this: your students are living through an EXTRAORDINARY moment in US history. And you have the privilege of giving these events shape and context. Your students will remember this semester for the rest of their lives. This is a rare learning opportunity."

Registration is now open for the first **Virtual Academic Conference** at Park University on March 7th! This free conference is designed to reach instructors teaching in all disciplines and all modalities. Please feel free to pass this exciting opportunity on to your instructors and staff!

©2020 Park University Faculty Center for Innovation. All rights reserved.
8700 NW River Park Drive, Parkville, MO 64152
(816) 584-6770 -- innovatepark.org

You receive this email because you are a Park University instructor or administrator.