



Registration Is Open!

2022-23 Special Interest Groups

Join a Faculty Community Today:

FCI is pleased to offer three inspirational Special Interest Groups (SIG) led by this year's Teaching Innovation Fellows. You will explore a chosen topic with a small community of faculty during the 4 sessions (one per term) of the academic year. Additional information is available below or on [FCI's Sign Up for a SIG webpage](#).

Register [HERE](#) for a Teaching Innovation Fellow SIG



Learn more about the 3 different SIG Communities you can join below:

Faculty Actively Fostering a Sense of Belonging

Led by FCI Teaching Innovation Fellow, Dr. Jennifer Whitley


The *Faculty Actively Fostering a Sense of Belonging* SIG will focus on faculty looking inward into how we can create a more inclusive learning environment. Join

us as we dive deeper into this topic, and utilize Dr. Tracie Addy's keynote address and book as a framework to share our thoughts and ideas. The first 10 registrants will be provided Dr. Addy's co-authored book – *What Inclusive Instructors Do*. The group intends to address the big question: How can we actively foster an inclusive class and sense of belonging, while also encouraging students to take ownership of their learning? [CLICK HERE](#) or watch the video below to learn more about this SIG.

Fall Dates & Times:

Location: Online; additional information to follow for those who register

- Sept. 14 (Wed.) from 12:00-1:00pm, CST
- Oct. 19 (Wed.) from 12:00-1:00pm, CST



Click the video above to watch the brief, 4-minute promotional recording for the *Faculty Actively Fostering a Sense of Belonging* SIG.

Beyond the Basics: Developing the Whole Student

Led by FCI Teaching Innovation Fellow, Dr. Heather Strafaccia

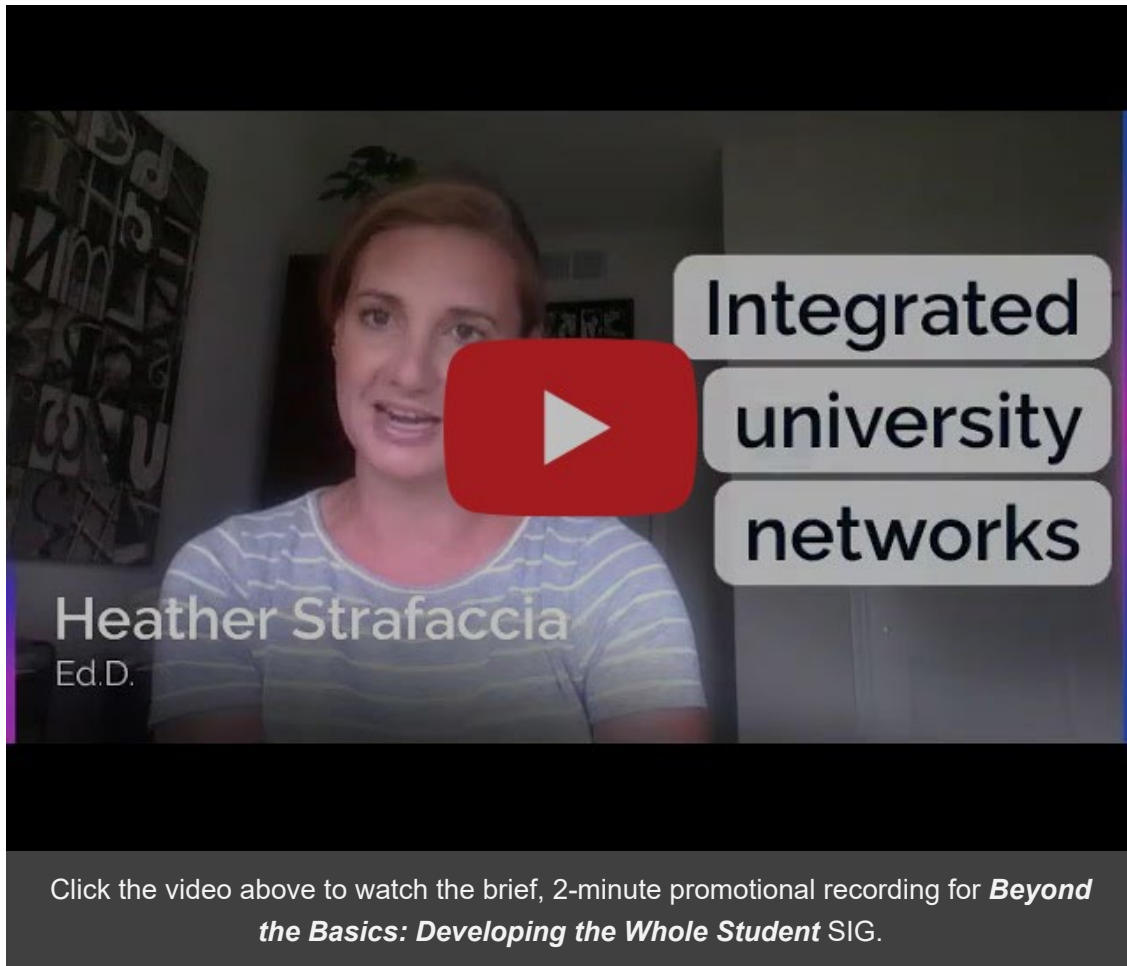
Join us for the *Beyond the Basics: Developing the Whole Student* SIG to connect with colleagues across the university and to guide and support student achievement. We'll help students move past basic cognitive skills and find innovative ways to assist students as they take a holistic approach and transform their learning. [CLICK](#)

[HERE](#) or watch the video below to learn more about this SIG.

Fall Dates & Times:

Location: Online; additional information to follow for those who register

- Sept. 13 (Tue.) from 12:00-1:00pm, CST
- Nov. 8 (Tue.) from 12:00-1:00pm, CST



Interdisciplinary Work across the Academy

Led by FCI Teaching Innovation Fellow, Dr. Patricia Ryberg

Are you interested in exploring how experiential learning methods can enhance your classes? Join the *Interdisciplinary Work across the Academy* SIG, share your thoughts and listen to others' ideas, and investigate these techniques while using a group of high performing students from the Honors Academy as a testing ground. Let's dive into this safe place together and discover best practices of experiential learning and how to successfully apply these strategies into the classroom. [CLICK HERE](#) or watch the video below to learn more about this SIG.

Fall Dates & Times:

Location: Online; additional information to follow for those who register

- Sept. 22 (Thur.) from 10:30-11:30am, CST
- Nov. 17 (Thur.) from 10:30-11:30am, CST

Did you know that
YOU
could shape the HA?

**I WANT YOU
FOR MY PIRATE ARMY**

Click the video above to watch the brief, 6-minute promotional recording for
Interdisciplinary Work across the Academy SIG.

©2022 Park University Faculty Center for Innovation. All rights reserved.
8700 NW River Park Drive, Parkville, MO 64152
(816) 584-6770 -- innovatepark.org

You receive this email because you are a Park University instructor or administrator.